

# Make the comparisons for yourself

Pictured are 2 y.o. heifers in a Holstein herd AB for over 30 years. They have been running together since calves and recently calved. This herd is in the top 200 for ABVs.

**Sired by Wholly Cow Genetics Ayrshire Bull**



**Artificially Bred by Holstein sires**



**These heifers have plenty of grass and being fed 1 kg of grain per day.**

**Which must be the most efficient at converting grass to energy?**

**Which will be the most profitable for you?**

**Which ones look like REAL COWS?**



**Nature's Blueprint Cow**

**Wholly Cow Genetics**

**Profitable Farming Systems™**

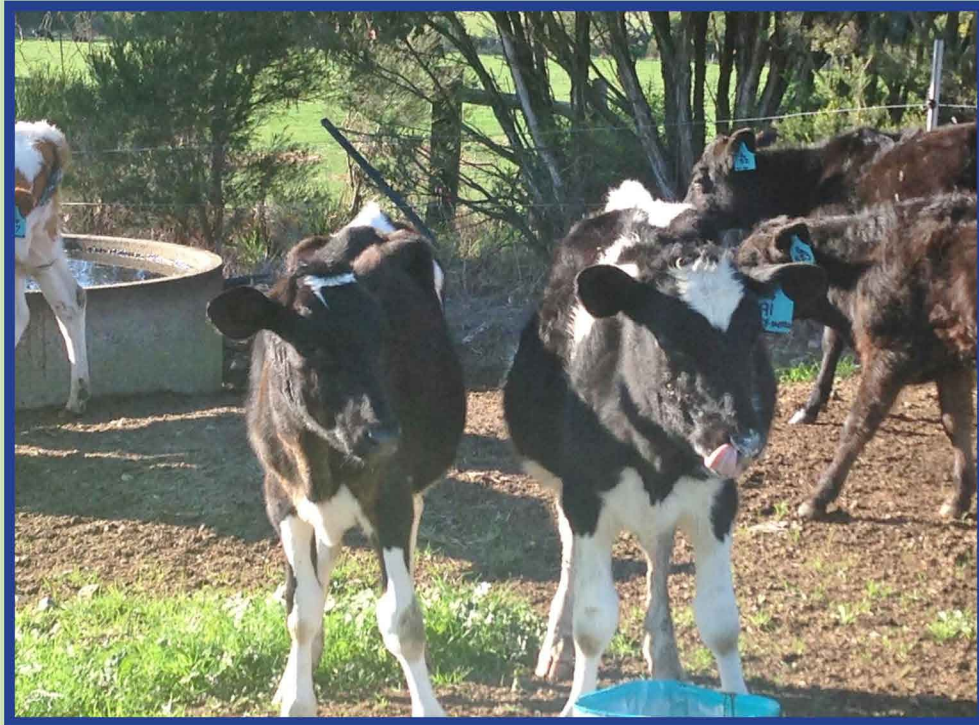
**[www.naturesblueprintcow.com](http://www.naturesblueprintcow.com)**

**John O'Brien phone: +61 410 273 887 email: [contact@naturesblueprintcow.com](mailto:contact@naturesblueprintcow.com)**



# Compare the Pair!

On the right sired by Valendale International  
On the left sired by Modern Holstein Sire



2 heifers running in the same herd



Sired by WCG Jersey

Sired by Mainstream Sire.



**Nature's Blueprint Cow**  
Wholly Cow Genetics  
**Profitable Farming Systems™**  
[www.naturesblueprintcow.com](http://www.naturesblueprintcow.com)

John O'Brien phone: +61 410 273 887 email: [contact@naturesblueprintcow.com](mailto:contact@naturesblueprintcow.com)



# Compare the Pair!

Do not fall for the promotional bull s...t. New Zealand farmers are now heavy feeders. New Zealand is the biggest importer of Palm Kernel in the World. Genuine 100% grass based production genetics are very, very scarce in that Country now! Look at the examples below of two 4 y.o. Cows in Australia running together: calved the same time and receiving no supplementary feed. Look at their body conformation.



4 generations of WCG  
Ayrshire genetics selected  
for economic function

4 generations of LIC Jersey  
genetics bred for numbers

**Which is the most efficient Cow for you to farm?**



**Nature's Blueprint Cow**  
Wholly Cow Genetics  
**Profitable Farming Systems™**  
[www.naturesblueprintcow.com](http://www.naturesblueprintcow.com)

John O'Brien phone: +61 410 273 887 email: [contact@naturesblueprintcow.com](mailto:contact@naturesblueprintcow.com)